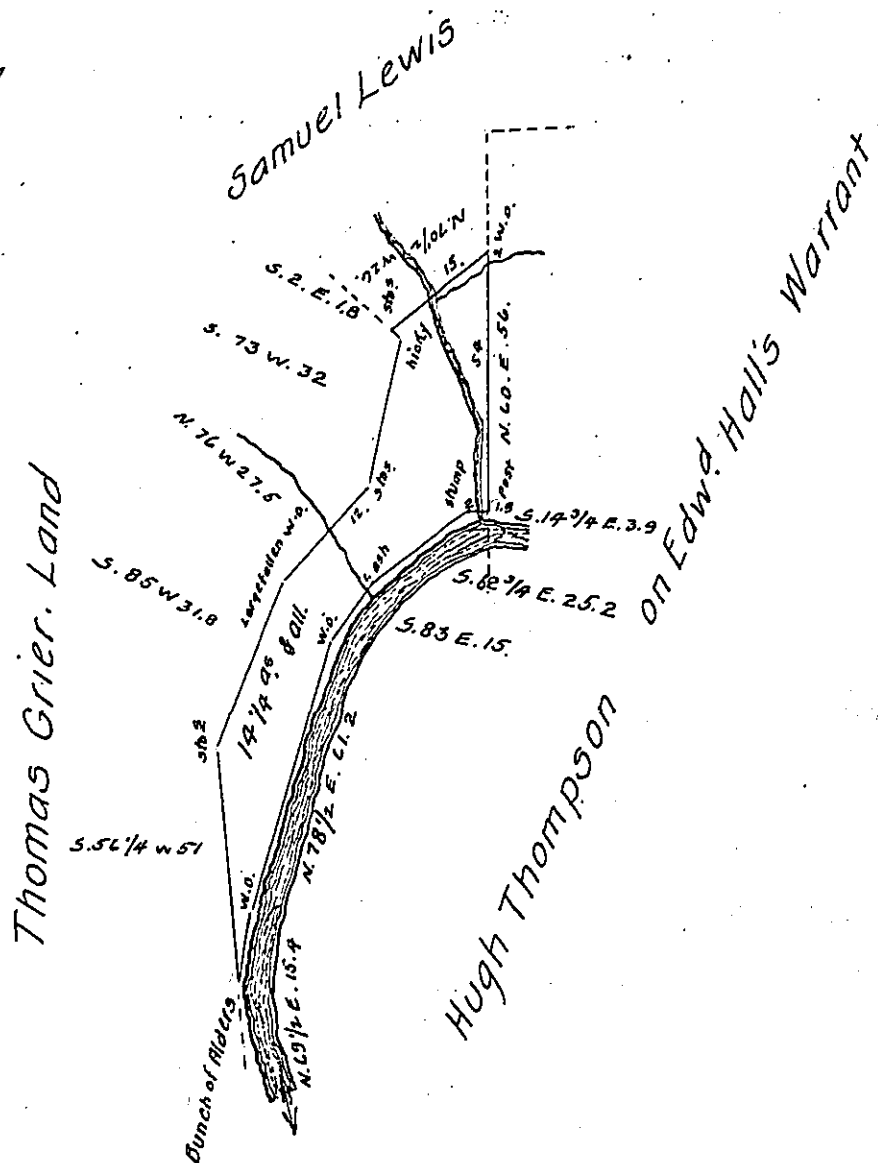


50 P<sup>s</sup> pr. inch



On very rough Creek hills, does not close so well as so small a survey ought to do.

Situate on the north branch of Redstone Creek in Franklin township, Fayette County, and Surveyed the 12<sup>th</sup> day of March 1830. In pursuance of a Warrant in the name of James Lewis for 15 Acres dated the 16<sup>th</sup> day of January 1830.

To Gabriel Hiester Esq. pr. F. Lewis D.S.  
Surveyor General

Note. There is a small Cabin on this Tract, and a family residing in it, was erected about the time the Warrant was applied for, no other improvements.

F. L. S.

IN TESTIMONY that the above is a copy of the original remaining on file in the Department of Internal Affairs of Pennsylvania, made conformably to an Act of Assembly approved the 16th day of February 1833, I have hereunto set my hand and caused the Seal of said Department to be affixed at Harrisburg, this twelfth day of November 1907.

Henry Howard  
Secretary of Internal Affairs.